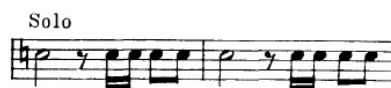


DMCO Trumpet Excerpts

The following order does not reflect the order of the audition.

- 1) Beethoven: Leonore Overture No. 3 - offstage solo (both times) ***In Bb**
- 2) Respighi: Pines of Rome – Offstage Trumpet Solo ***In C**
- 3) Shostakovich: Symphony 5 (Mvmt I – [18] to [20] & [27] to [32]) ***In Bb**
- 4) Bizet: Carmen Suite No. 1 - Prelude (all) ***In A**
- 5) Stravinski: Petrushka (1947 Ed.) - "Ballerina's Dance" (one before [134] to [139]) ***In Bb**

1) Beethoven: Leonore Overture No. 3 - offstage solo (both times)



2) Respighi: Pines of Rome – Offstage Trumpet Solo

il più lontano possibile Più mosso

f ma dolce ed espress.

in Do

3) Shostakovich: Symphony 5 (Mvmt I – [18] to [20] & [27] to [32])

Tromba I in B

Musical score for Tromba I in B, measures 17 to 20. The score is written on two staves. Measure 17 has a tempo marking of $\text{♩} = 92$ and a dynamic of f . Measure 18 is marked *poco animando*. Measure 19 has a tempo marking of $\text{♩} = 104$ and a dynamic of mp . Measure 20 is marked f .

Tromba I in B

Musical score for Tromba I in B, measures 27 to 33. The score is written on six staves. Measure 27 has a tempo marking of $\text{♩} = 126$ and a dynamic of ff , marked *Poco sostenuto*. Measure 28 is marked ff . Measure 29 is marked f . Measure 30 is marked *cresc.* and ff . Measure 31 is marked *Poco stringendo* and f . Measure 32 has a tempo marking of $\text{♩} = 138$. Measure 33 is marked *poco meno f*. The score includes various dynamics, articulation marks, and performance instructions.

4) Bizet: Carmen Suite No. 1 - Prelude (all)

in A.
N° 1. Prélude.
Andante moderato. (♩ = 58.)

f *2* *dim.*
ff
p *meno p* *cresc. molto* *ff* *attacca*

5) Stravinski: Petrushka (1947 Ed.) - "Ballerina's Dance" (one before [134] to End)

in B \flat Solo $\text{♩} = 118$ Solo

senza sord. *mf* *p* *mf*

The image shows a musical score for the 'Ballerina's Dance' from Stravinsky's Petrushka. The score is in B-flat major and 2/4 time, with a tempo of Allegro (♩ = 118). It consists of five staves of music. The first staff is marked with measure numbers 134, 135, and 136. The second staff is marked with 136 and 137. The third staff is marked with 137 and 138. The fourth and fifth staves continue the piece. The music features a complex rhythmic pattern with many sixteenth and thirty-second notes. Dynamics include *mf* (mezzo-forte), *p* (piano), and *mf* (mezzo-forte). The score is marked 'Solo' and 'senza sord.' (without mutes).